



# Pacific County Weekly Data

## 10/21/2020

<b>County Data and Case Update</b>	<b>9/30/2020</b>	<b>10/7/2020</b>	<b>10/14/2020</b>	<b>10/21/2020</b>
<b>Confirmed Cases (Total)</b>	86	91	107	115
<i>Confirmed Cases that resided in Pacific County</i>	83	88	104	112
<i>Active Cases (monitored by Public Health)</i>	7	11	21	10
<i>Probable Cases (monitored by Public Health)</i>	1	6	4	3
<i>Closed Cases (no longer monitored by Public Health)</i>	80	86	90	108
<b>Hospitalizations</b>	8	8	8	8
<b>Deaths</b>	3	3	3	3
<b>Percent Deaths (deaths/confirmed cases)</b>	3.5%	3.3%	2.8%	2.6%
<b>Total Tests: Pacific County Residents (Pacific County Healthcare/Public Health)</b>	2602 (4229)	2770 (4488)	3054 (4880)	3250 (-)
<b>Percent Positive (confirmed cases/total tests)</b>	3.3%	3.3%	3.5%	3.5%
<b>Percent Positive (7 Day Average):</b>	3.7%	3.0%	5.6%	4.1%
<b>Cases per 100k per 14 days (rolling)</b>	27.7	50.1	87.8	87.8

Updates highlighted

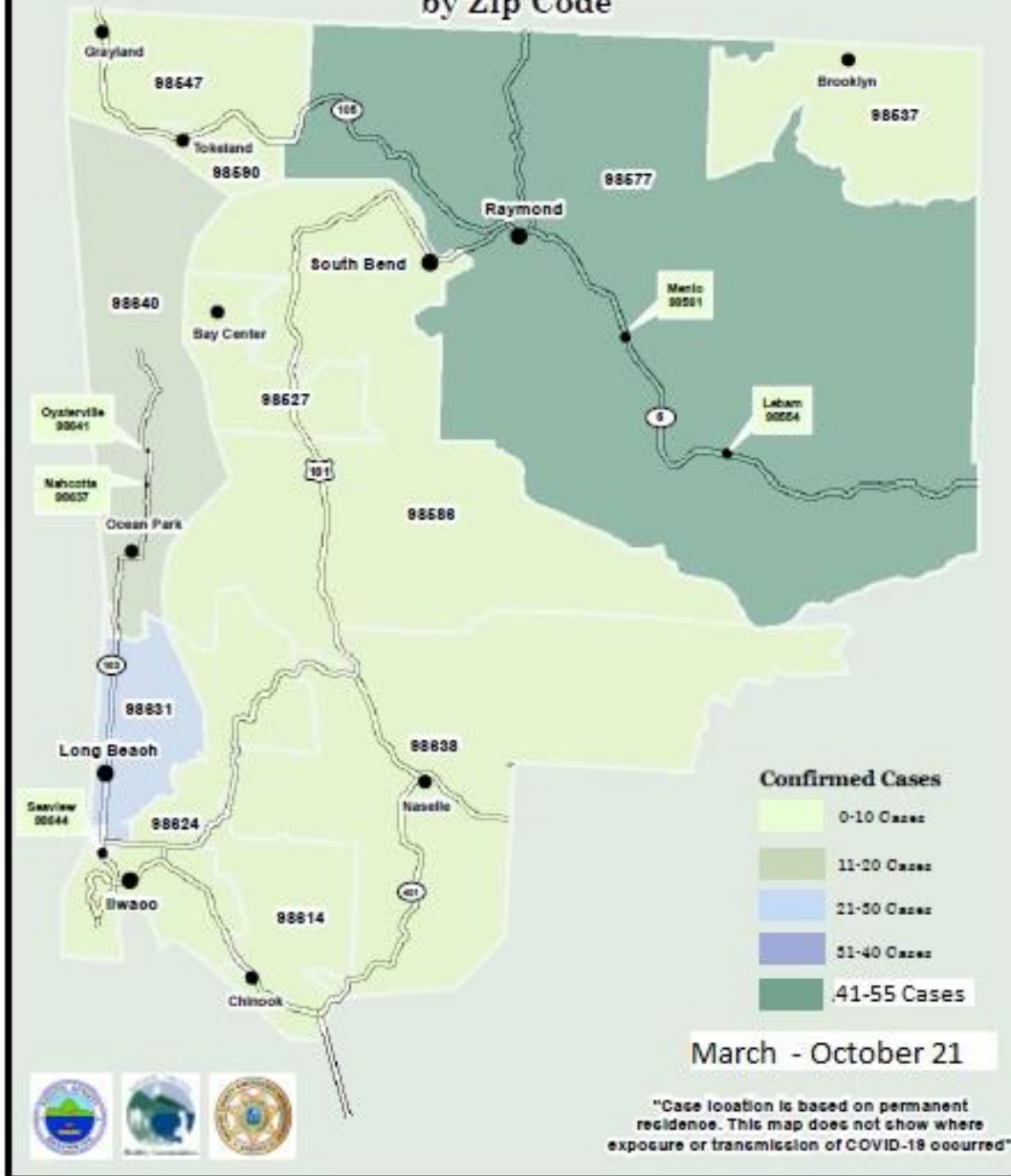
State Generated Dashboard (<https://www.pacificcountycovid19.com/>). Time lag/Correction.

# PACIFIC COUNTY

Total Number of Residents  
Confirmed with Covid-19  
by Zip Code

## Zip Code Data

- Confirmed case count is specific to each zip code.
- Represents permanent residence of Pacific County COVID-19 cases.
- Not a representation of where COVID-19 exposure or transmission occurred.



# COVID-19 ACTIVITY LEVEL

**>75 cases per 100k  
people in 14 days**

- Almost entirely remote learning
- Limited in-person learning for high-need students
- No sports or extra-curricular activities



*Based on Washington State Department of Health  
guidelines released August 4, 2020.*



# Pacific County Metrics: School Risk Assessment

**Reference:** *Decision Tree for Provision of In Person Learning among K-12 Students at Public and Private Schools during the COVID-19 Pandemic:*  
[https://www.doh.wa.gov/Portals/1/Documents/1600/coronavirus/DecisionTree-K12schools.pdf?utm\\_medium=email&utm\\_source=govdelivery](https://www.doh.wa.gov/Portals/1/Documents/1600/coronavirus/DecisionTree-K12schools.pdf?utm_medium=email&utm_source=govdelivery)

